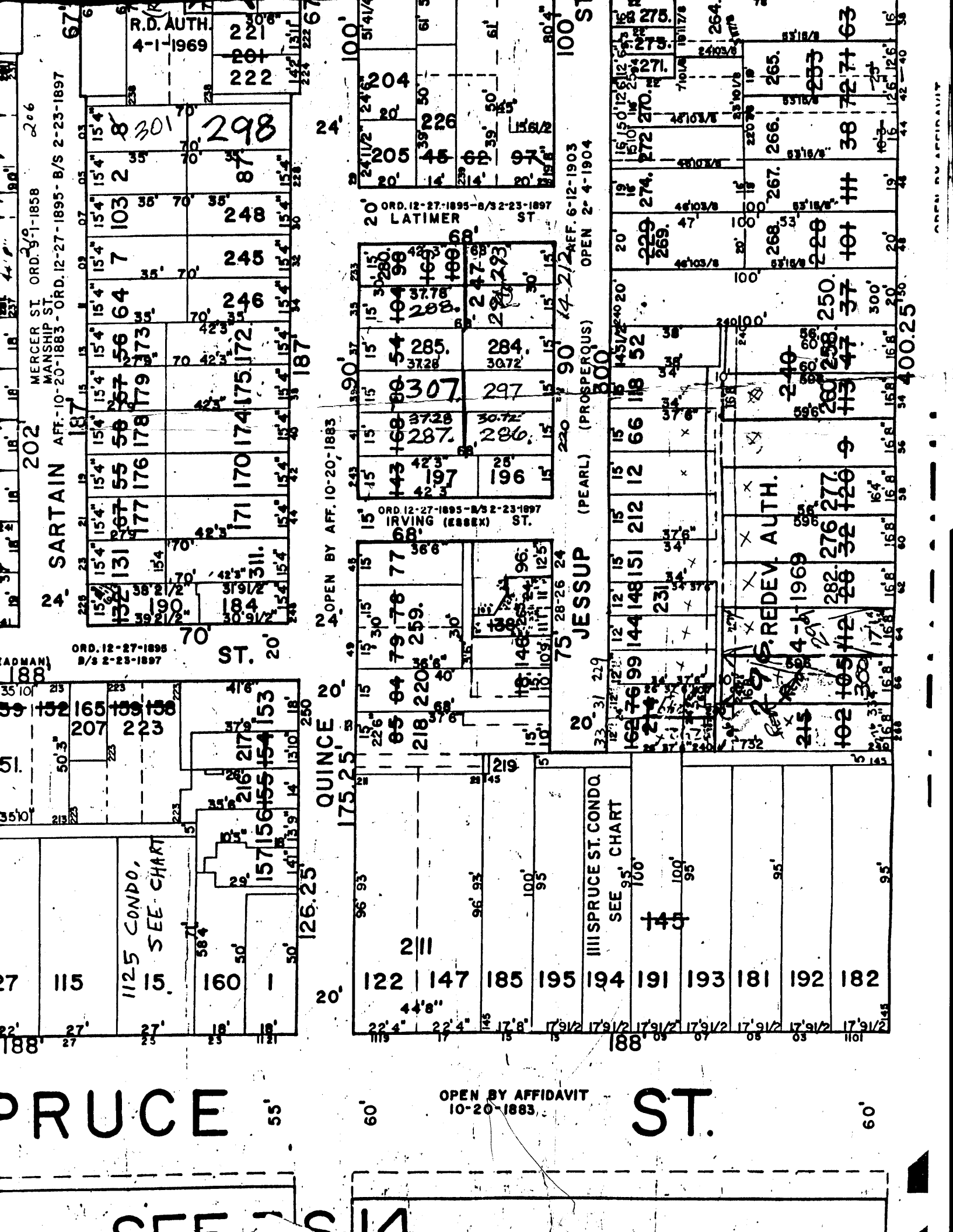


PRUCE

ST.



OPEN BY AFFIDAVIT
10-20-1883

MERCER ST. ORD. 3-1-1858 206
MANSHIP ST.
N. SARTAIN AFF. 10-20-1883 - ORD. 12-27-1895 - B/S 2-23-1897

ORD. 12-27-1895
B/S 2-23-1897

OPEN BY AFF. 10-20-1883

QUINCE ST.

REF. 6-12-1903
OPEN 2-4-1904

JESSUP (PEARL) (PROSPERQUS) ST.

JESSUP (PEARL) (PROSPERQUS) ST.

1125 CONDO.
SEE CHART

S. REDEV. AUTH.

122	147	185	195	194	191	193	181	192	182
22' 4"	22' 4"	17' 8"	17' 9 1/2"	17' 9 1/2"	17' 9 1/2"	17' 9 1/2"	17' 9 1/2"	17' 9 1/2"	17' 9 1/2"
119	17	15	15	188	89	67	88	83	1101